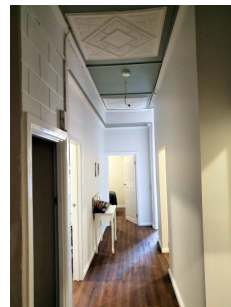
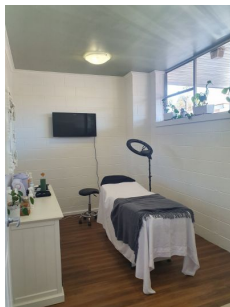




Peter Calliss
REAL ESTATE



58 Patterson Street Whyalla SA

Commercial / Retail outlet for Lease
58 Patterson Street, Whyalla

At the top of the Main Street in Whyalla CBD
Attractive Frontage
Modern fresh light and bright décor throughout
Quality floating floors
Character traits of its era including stone walls, decorative high ceilings, fire place in room 4
Serviced by split system air conditioner and electric hot water service and kitchenette

Offering:
Character solid retail area
With 5 main rooms
Inviting Reception / Entrance from the Street
2 walk in store areas

Price : CONTACT AGENT
Building Size : 140 sqm
View : <https://www.petercalliss.com.au/lease/sa/eyre-peninsula/whyalla/commercial/retail/7765775>

<https://www.petercalliss.com.au>

Street Entrance

